



THE NOYES MUSEUM OF ART OF STOCKTON UNIVERSITY PRESENTS:

BETTE BLANK

Artist Statement:

I paint to tell a story, to capture a feeling, to have you see the world through my eyes. I use pattern, color and composition to achieve my goal, in oil paint, egg tempera, watercolor, gouache, clay and wood.

I always look for humor in a situation, from the marriage of Prince Charles and Camilla to the biblical Jacob dreaming of angels riding on escalators. I often use words in paintings, both as a visual effect and as an opportunity to express additional meaning (see paintings: Sandy, Homage to Dr. Gitlin, Skirt, High Heels, Salami Sandwich)

Ordinary objects and sensations can have a transformative magic, bringing us back to a different time and place in one's life. For example, the smell of a salami sandwich in the lobby of Lincoln Center triggered a flood of seemingly forgotten memories of lunchtime in Public School 217. Everyday experiences like going to the dentist, getting a manicure, eating sushi, or visiting a shoe salon are my favorite subjects.





Bette Blank
Bette's House
Oil on Canvas
30" x 40"



Bette Blank
Laundromat Dream
Oil on Linen
40" x 30"



Bette Blank
Bather in Florida
Egg tempera on Clayboard



Bette Blank
Homage to Dr. Gitlin
Oil on Canvas
30" x 40"



Bette Blank
Sushi Palace
Oil on Canvas
30" x 40"



Bette Blank
Movie Kiss
Oil on Linen
24" x 24"



Bette Blank

*Living room with green chairs and the Fathers of
our Country!!*

Oil on Linen



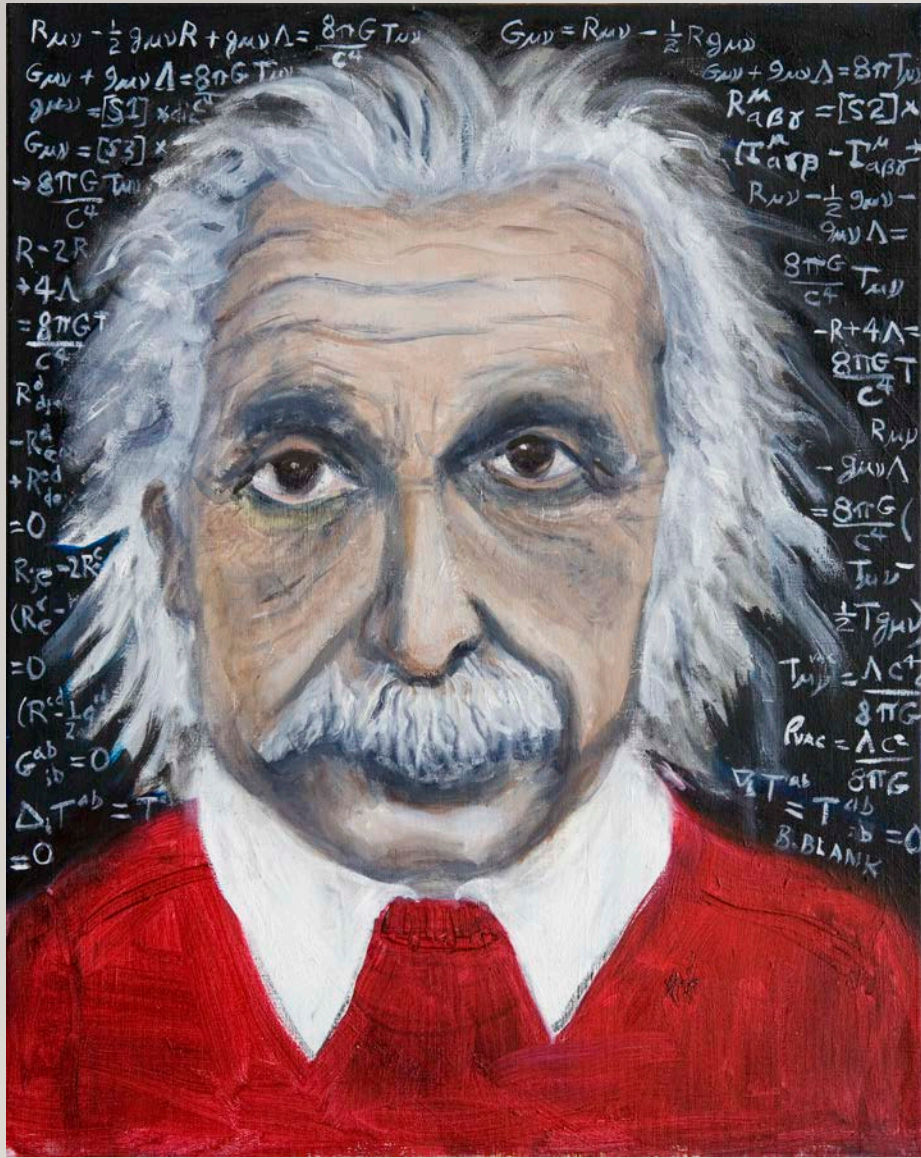
Bette Blank
Still Life With Eggplant
Oil on Canvas



Bette Blank
San Remo Day
Oil on Linen
40" x 30"



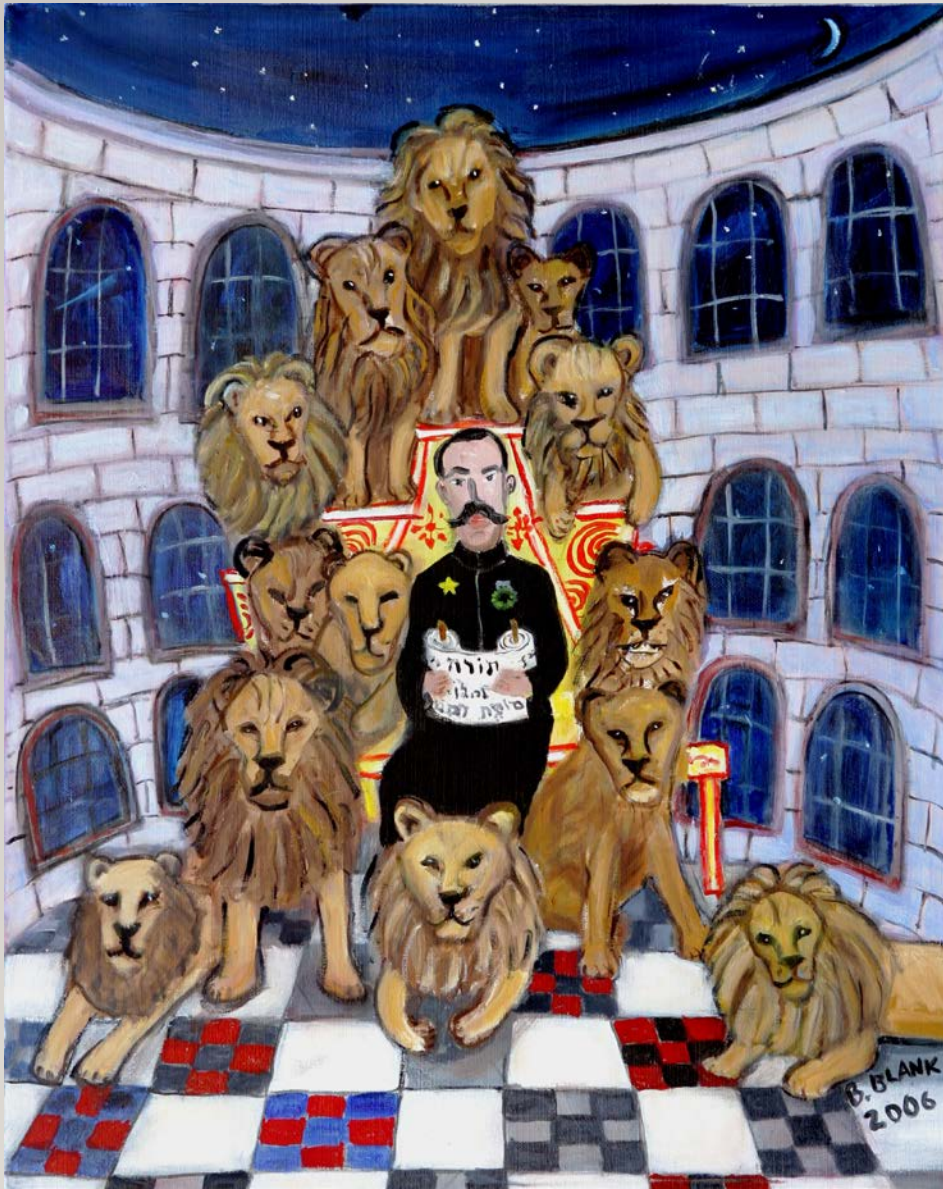
Bette Blank
The Blank Brothers
Oil on Linen
20" x 16"



Bette Blank
Einstein
Oil on Canvas
20" x 16"



Bette Blank
Charles and Camila
Oil on Linen
20" x 16"



Bette Blank
Daniel in the Lions Den
Oil on Linen
20"x 16"



Bette Blank
Tug of War
Oil on Linen
30" x 40"



Bette Blank
Palm Reading
Oil on Canvas
30"x 24"



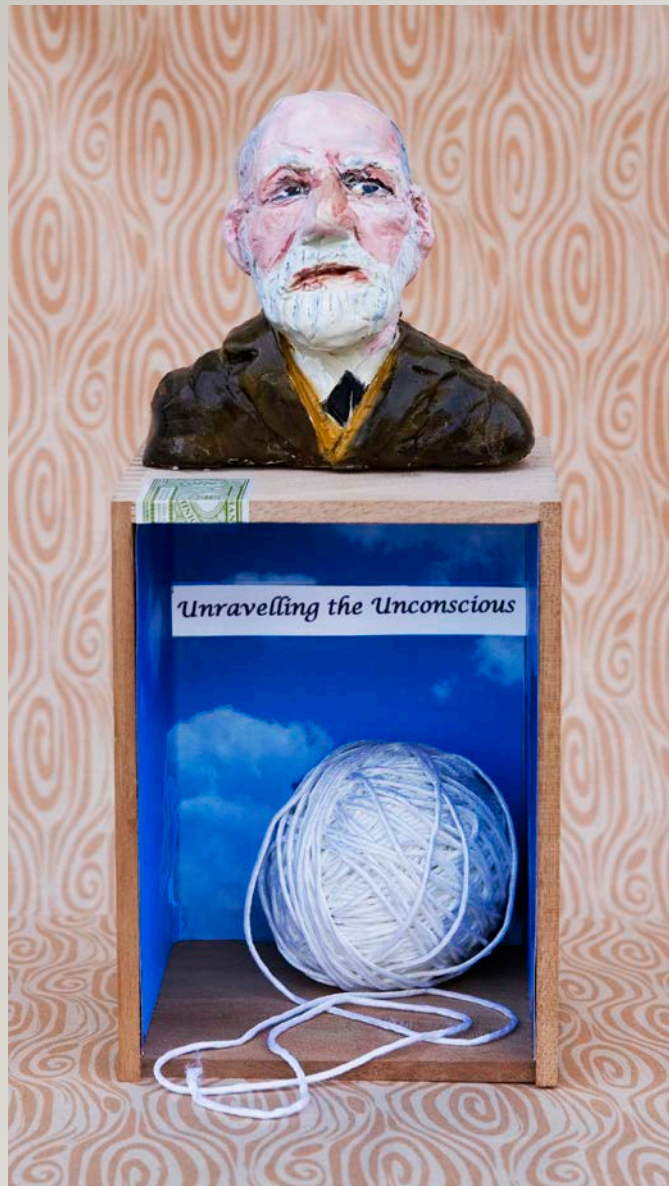
Bette Blank
The Story of Joseph
Oil on Canvas
40" x 30"



Bette Blank
Alice Box
Mixed Media
10.5"h x 15" w (open) x 3"d



Bette Blank
Medicine Cabinet II
Mixed Media- Painted Clay, Wood Cabinet



Bette Blank
Freud, Unravelling the Unconscious
Mixed Media
14" x 4" x 4"



Bette Blank

Moon Box

Mixed Media- Wood, Paper, Paint, and
Rhinestones

11.5" x 12" x 2"



Bette Blank
Tattoo Foot
Wood and Paint
10.5" x 12" x 3.5"

About the Artist:

Bette Blank has studied painting, sculpture, and print making at the following institutions: the Brooklyn Museum School of Art, the Fine Arts Work Center of Provincetown, MA, The New Jersey Center of Visual Arts, The Newark Museum's School of Art in addition to a PhD in Engineering from U.C. Berkeley.

Blank's work has been shown in countless solo or group exhibitions at museums, galleries, and colleges or universities across the east coast starting in 2001. Her work is included in collections of seven different museums, including the Noyes Museum of Art of Stockton University, and numerous private collections.

She currently resides in Madison, New Jersey actively producing new work.

Artist's Website: <http://www.betteblank.com/index.htm>





Noyes
Museum of Art
STOCKTON UNIVERSITY

WWW.NOYESMUSEUM.ORG



© THE NOYES MUSEUM OF ART OF STOCKTON UNIVERSITY 2020



Funding for the Noyes Museum of Art of Stockton University is provided in part by the NJ State Council on the Arts/Department of State, a partner agency of the National Endowment for the Arts; and the Geraldine R. Dodge Foundation.