



Noyes
Museum of Art
STOCKTON UNIVERSITY

THE NOYES MUSEUM OF ART OF STOCKTON UNIVERSITY PRESENTS:

A.J. RUDISILL

About the Artist:

Self-taught artist Anthony Rudisill has been drawing wildlife from a very young age. Born in Philadelphia, he moved when he was a teenager to southern New Jersey to become a commercial artist. Surrounded by wildlife, he was able to develop his passion for nature; in particular, birds. For many years, Rudisill has expressed his devotion to nature and for the past 6 years, he has been painting the beauty of the National Parks. This series now consists of over 38 landscapes and seascapes.

Rudisill is one of New Jersey's most celebrated realist painters and an advocate for preserving the National Parks. Through his work, his mission is to spread appreciation and recognition for the parks. In honor of the National Parks Service's 100th Anniversary in 2016, Rudisill strives to share "the splendor of these spaces and the awe he feels with each painting" with the world.





A.J. Rudisill
Black Hills Forest at Mt. Rushmore
Acrylic on panel
18" x 26"



A.J. Rudisill
The Yellowstone River
Acrylic on panel
18" x 24"



A.J. Rudisill
Entering Red Canyon
Acrylic on panel
20" x 30"



A.J. Rudisill
Yosemite Falls
Acrylic on panel
40" x 30"



A.J. Rudisill
Tetons Bison
Acrylic on panel
20" x 30"



A.J. Rudisill
Cook's Meadow/Yosemite
Acrylic on panel
18" x 26"



A.J. Rudisill
Delicate Arch
Acrylic on panel
22" x 33"



A.J. Rudisill
*The Giant Sequoias/
Sequoia National Park CA*
Acrylic on panel
22" x 33"





A.J. Rudisill
Grand Canyon Splendor
Acrylic on panel
20" x 30"



A.J. Rudisill
Mitchell Mesa
Acrylic on panel
18" x 24"



A.J. Rudisill
Acadia Sunrise
Acrylic on panel
30" x 40"



A.J. Rudisill
Navajo Loop Trail
Acrylic on panel
18" x 24"



A.J. Rudisill
Twisted Tree/
Monument Valley AZ
Acrylic on panel
18" x 24"



A.J. Rudisill
Monument Morning
Acrylic on panel
18.5" x 25.5"



A.J. Rudisill
*The North Window/
Arches National Park UT*
Acrylic on panel
18" x 24"



A.J. Rudisill
Oak Creek Canyon/
Coconino National Forest AZ
Acrylic on panel
20" x 30"



A.J. Rudisill
*Trail to Landscape Arch/
Arches National Park UT*
Acrylic on panel
24" x 30"



A.J. Rudisill
Cathedral Spires Trail Head
Acrylic on panel
30" x 40"



A.J. Rudisill
Petrified Forest National Park AZ
Acrylic on panel
30" x 40"





A.J. Rudisill
*Dune Arch/
Arches National Park UT*
Acrylic on panel
16" x 20"



A.J. Rudisill
*Mesa Arch/
Canyonlands National Park UT*
Acrylic on panel
16" x 20"



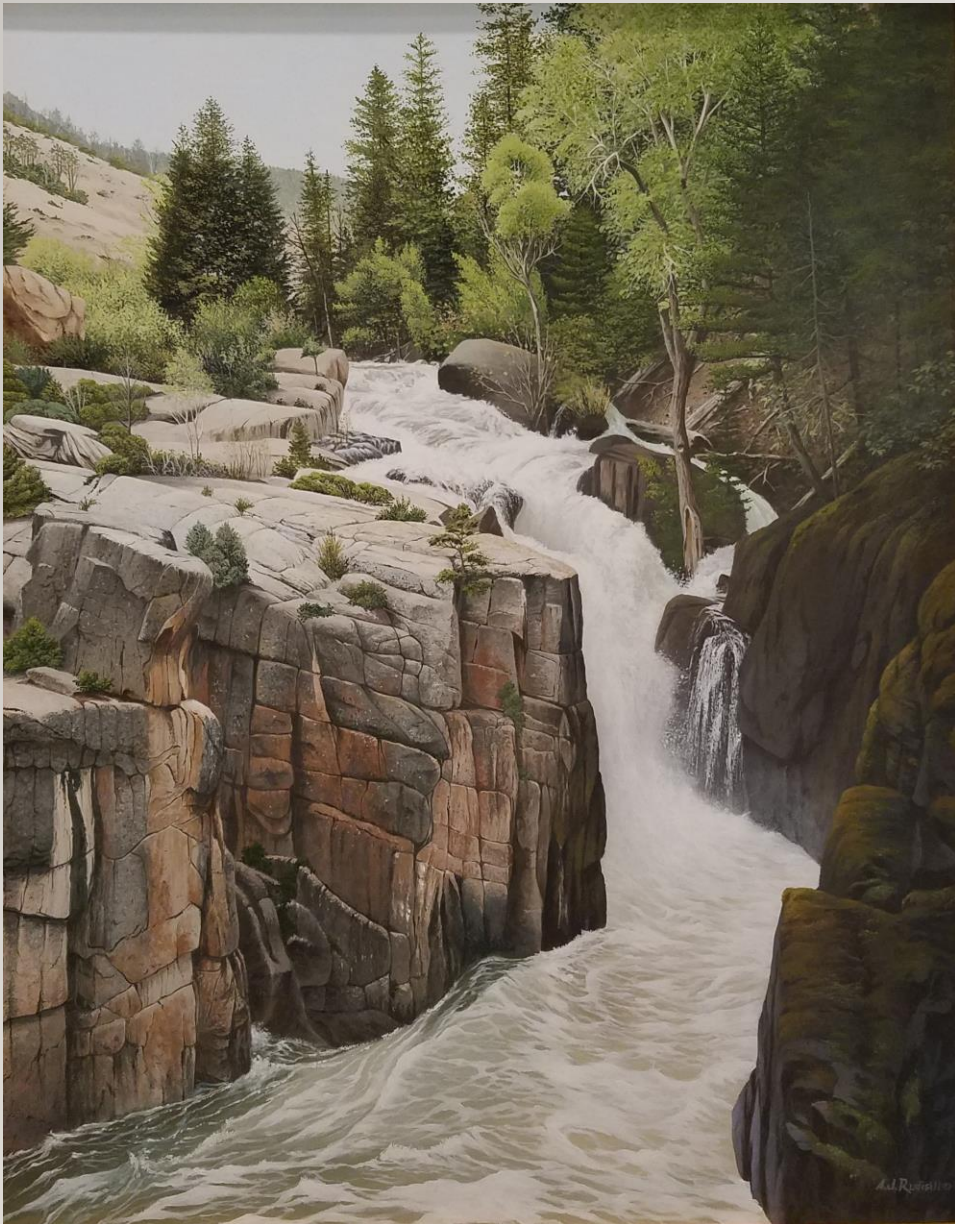
A.J. Rudisill
*Sand Dune Arch Trail/
Arches National Park UT*
Acrylic on panel
16" x 20"



A.J. Rudisill
Bryce Canyon National Park UT
Acrylic on panel
30" x 40"



A.J. Rudisill
Badlands National Park SD
Acrylic on panel
30" x 40"



A.J. Rudisill
Shell Falls/
Bighorn National Forest WY
Acrylic on panel
30" x 24"



A.J. Rudisill
The Grand Tetons
Acrylic on panel
24" x 30"



A.J. Rudisill
Half Dome
Acrylic on panel
30" x 24"



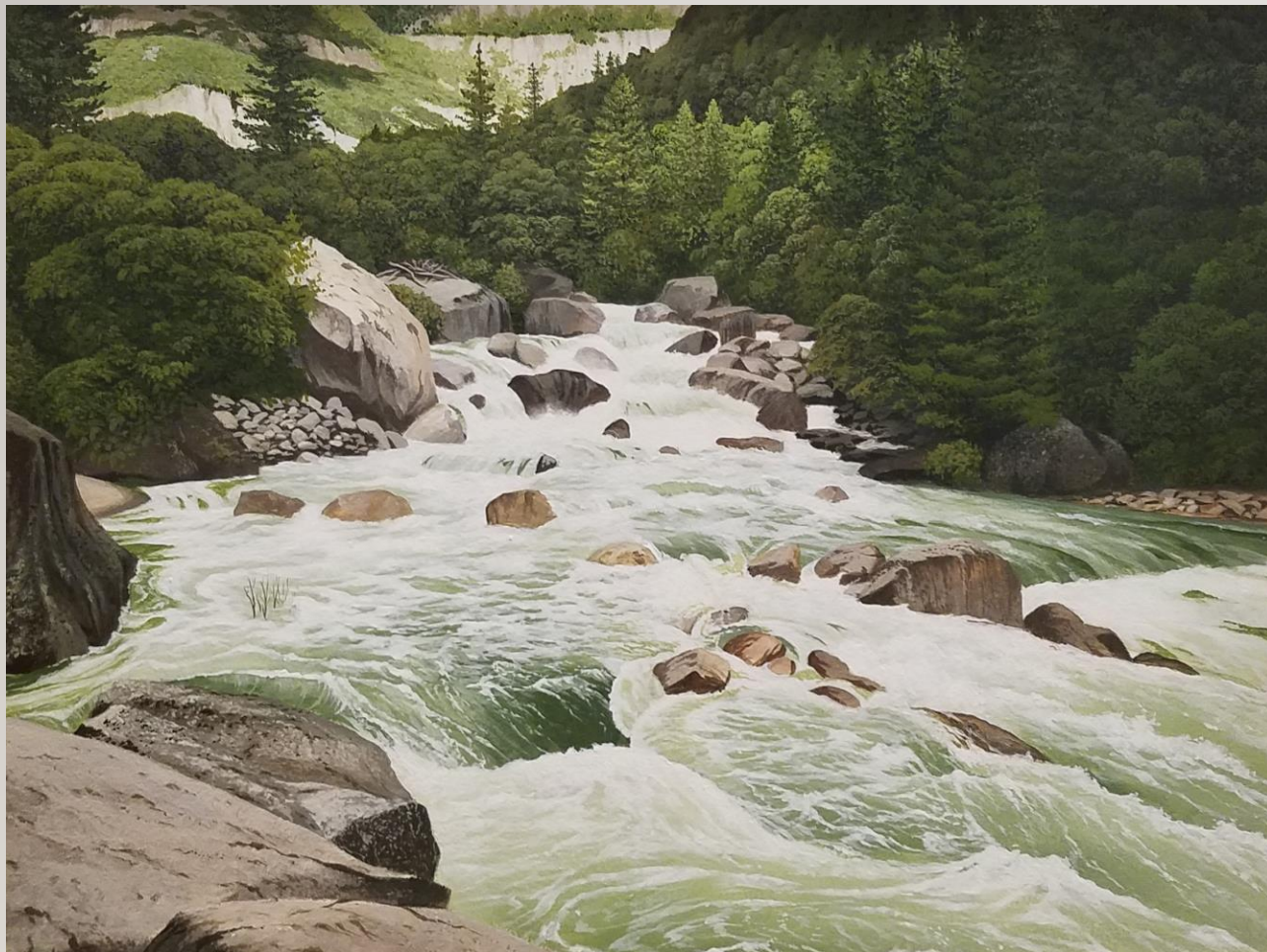
A.J. Rudisill
Yosemite Valley
Acrylic on panel
24" x 36"



A.J. Rudisill
Monument Valley
Acrylic on panel
30" x 40"



A.J. Rudisill
*Black Sand Basin/
Yellowstone National Park WY*
Acrylic on panel
16" x 20"



A.J. Rudisill
*The Merced River/
Yosemite National Park CA*
Acrylic on panel
14" x 18"



A.J. Rudisill
*Black Sand Basin/
Yellowstone National Park WY*
Acrylic on panel
16" x 20"



A.J. Rudisill
*The Cliffs of Point Reyes/
Point Reyes National Park CA*
Acrylic on panel
16" x 20"



A.J. Rudisill
*The Virgin River/
Zion National Park UT*
Acrylic on panel
18" x 24"



A.J. Rudisill
El Capitan/
Yosemite National Park CA
Acrylic on panel
20" x 30"



A.J. Rudisill
*Jackson Lake/
Grand Tetons National Park WY*
Acrylic on panel
30" x 40"



A.J. Rudisill
Bear Island Light/ Acadia
Acrylic on panel
22.5" x 30"



A.J. Rudisill
The Hartwell Tavern
Acrylic on panel
18" x 24"



A.J. Rudisill
*The Watchman/
Zion National Park UT*
Acrylic on panel
30" x 40"



A.J. Rudisill
*Cathedral Spires/
Merced/ Yosemite*
Acrylic on panel
18" x 24"



A.J. Rudisill
The Grand Tetons
Acrylic on panel
24" x 30"



A.J. Rudisill
Saguaro National Park AZ
Acrylic on panel
30" x 40"



A.J. Rudisill
Hopi Point Sunrise/
Grand Canyon AZ
Acrylic on panel
30" x 40"



A.J. Rudisill
The Hunter/ Bryce Canyon
Acrylic on panel
18" x 24"



A.J. Rudisill
Canyon de Chelly National Park AZ
Acrylic on panel
30" x 40"



A.J. Rudisill
Spring Thaw/ Cascade Creek/
Yosemite National Park CA
Acrylic on panel
30" x 40"



A.J. Rudisill
*Mormon Barn/
Grand Tetons National Park WY*
Acrylic on panel
18" x 24"



A.J. Rudisill
The Kaweah River/
Sequoia National Park CA
Acrylic on panel
18" x 24"



A.J. Rudisill
*Shafer Canyon Overlook/
Canyonland National Park UT*
Acrylic on panel
30" x 40"



A.J. Rudisill
Skyline Arch/
Arches National Park UT
Acrylic on panel
30" x 40"



A.J. Rudisill
Yellowstone National Park WY
Acrylic on panel
16" x 20"

Help Rudisill Share his Collection of the National Parks

Rudisill is looking to attract the attention of the media, galleries, museums and individual or corporate investors who can help him share his National Parks Series of paintings with the public.

You can view the full collection at <http://www.ajrudisill.com> and reach the artist at arudisill@verizon.net



Noyes
Museum of Art
STOCKTON UNIVERSITY

WWW.NOYESMUSEUM.ORG



© THE NOYES MUSEUM OF ART OF STOCKTON UNIVERSITY 2020



Funding for the Noyes Museum of Art of Stockton University is provided in part by the NJ State Council on the Arts/Department of State, a partner agency of the National Endowment for the Arts; and the Geraldine R. Dodge Foundation.